

Annual Report 2018

WOMEN AND YOUTH SUPPORTING EACH OTHER



Letter from the Board

What does it take to create community change? The ripple of change starts with just one: One vision. One informed individual. One influencer.

One inspires others, and WYSE women aspire to inspire. WYSE impacts hundreds of young women and girls each year; each one, in turn, becomes a change agent in her respective personal, social, and civic communities. Through WYSE, women and girls across the nation are equipped with the information, resources, and support necessary to make positive life choices and grow as leaders who create change.

WYSE is fueled 100% by volunteer power, from our college branches to our national organization leadership. These dedicated women aspire to inspire by helping girls build confidence to identify and constructively use their power, expanding WYSE's impact by empowering young women in communities across the US.

Letter from the Board

Empowered women empower women; in 27 years of WYSE, we've seen mentees become mentors, mentors become directors, and directors become national board members — each eager to continue affecting positive change.

So, how do we create community change? One empowered woman at a time. WYSE is women of all colors uniting for change and self-determination. We continue to fortify a national network of like-minded WYSE women who have acquired the confidence, skills, and passion for leading and empowering others to do the same. We honor our terrific volunteers who aspire to inspire our mentees and one another through WYSE.

WYSElove,
Melissa Pierce
Chair, National Board of Directors



Why WYSE?

Women and Youth Supporting Each Other (WYSE) is a national mentorship organization that provides adolescent girls in underserved communities with the information, resources, and support to make healthy decisions and create community change. With branches at twelve universities nationwide, WYSE focuses on empowering women and girls through group-based and one-on-one mentorship offered by college women volunteers, and employs a national curriculum to address critical issues from building self-awareness to exploring future options.

In 2017, WYSE celebrated 25 years of service since our founding in 1992.



"IN JUNE, MY MENTEE MESSAGED ME THAT SHE WAS HER 8TH GRADE CLASS VALEDICTORIAN. SHE WOULD BE GIVING A SPEECH AT HER GRADUATION AND INVITED ME TO COME. THE MIDDLE SCHOOL SAID 'BECAUSE YOU HAD A PART IN THIS 8TH GRADE COHORT'S SUCCESSES, WE WOULD LOVE TO HAVE YOU AT THE CULMINATION CEREMONY!'"

CHANDRA INGRAM
WYSE USC



"I WAS SO EXCITED SHE INVITED ME AND HAPPY TO SEE MY TWO MENTEES STEAL THE STAGE WITH ALL OF THEIR ACADEMIC AWARDS. SO MANY OF OUR WYSE GIRLS WERE HONOR STUDENTS AND AWARD WINNERS. MY MENTEE GAVE HER SPEECH IN SPANISH AND INCLUDED A SHOUTOUT TO WYSE, THANKING THE PROGRAM AND THE MENTORS FOR HELPING SHAPE HER INTO THE PERSON SHE IS TODAY."

CHANDRA INGRAM
WYSE USC



Our Branches

George Washington University | Marquette University | New York University | Occidental College |
Stanford University | Tulane University | University of Chicago | University of California, Berkeley |
University of California, Irvine | University of California, Los Angeles | University of Southern California





Our Middle Schools

University Neighborhood Middle School | Langston Hughes Academy | PUC CALS | Mark Twain Middle School | Francisco Sepulveda Middle School | Camino Nuevo Charter Academy | VISTA Charter Middle School | Animo Jefferson Charter Middle School | Crown Preparatory Academy | Jefferson Middle School Academy | Sierra Preparatory Academy | John B. Drake Elementary | Lovonya DeJean Middle School | Barack Obama School of Career and Technical Education | Cesar Chavez Academy



Mission

To empower young women by providing the resources and support necessary to make positive life choices and create community change

Vision

To create a world in which all women are empowered to determine their future and effect change

2018-19 Milestones

497

mentees and mentors served by
WYSE

198

sessions designed to empower
young women

76

young women involved in
branch leadership

29,859

hours of volunteer time

11

WYSE branches nationwide

15

middle schools served

137

special events, such as movie screenings,
museum visits, empowerment day, college
campus tours, ice skating, express
yourself day

Methodology:

Total number of mentees and mentors are taken from point-in-time counts and likely represent an undercount of the number of program participants. Hours of volunteer time is calculated from the numbers of mentors and branch directors; hours of session by branch; Board of Director volunteer time; and hours spent on training mentors.

Outcomes

Mentees

98%

I feel that WYSE is a safe space for all mentees.

96%

WYSE helped me be able to take action against sexism, racism, and discrimination.

96%

I plan to continue my relationship with my mentor after WYSE

96%

WYSE helped me be confident in my ability to make healthy decisions to achieve my goals.

Mentors

98%

I would recommend being a WYSE mentor to other young women.

95%

WYSE helped me be involved in my community.

92%

Training provided by WYSE adequately prepared me to be a mentor.

86%

WYSE curriculum materials are good or excellent quality.

Methodology:

End-of-year surveys were administered at all WYSE branches and middle schools. Questions were asked on a four-point scale from 1 ("Strongly Disagree") to 4 ("Strongly Agree"). Percentages reflect the proportion of respondents who answered 3 or 4 on the scale.



Leadership Training

For over a decade, WYSE has been hosting our flagship leadership program, the **National Leadership Training Conference (NLTC)**, for our branch directors from all over the country. This is an unique opportunity for the leaders of our branches to develop their leadership skills as well as learn best practices from sister branches. Last year, NLTC 2018 was hosted at the University of Southern California from **July 27 - 29, 2018**.

WYSE Week

WYSE branches celebrated WYSE Week from **April 8 - 12, 2019** with the theme "Aspire to Inspire".

Our branches participated by hosting WYSE Week events with mentors, mentees, or on campus focusing on community action. All week long, stories were shared on social media all about discussions on what we each aspire to be.

Self-aware

Help others

don't miss

to think about
yourself
before others

Nicer to myself

assert myself more

Confident

loving

care-free

Selfless

independent

Who do you

Bolder

Aspire

to be?

True
Humble

Nice!

balanced

Open to new
things

brave

Knowledgeable

never say
you hate something

Outgoing

Kind

Outgoing

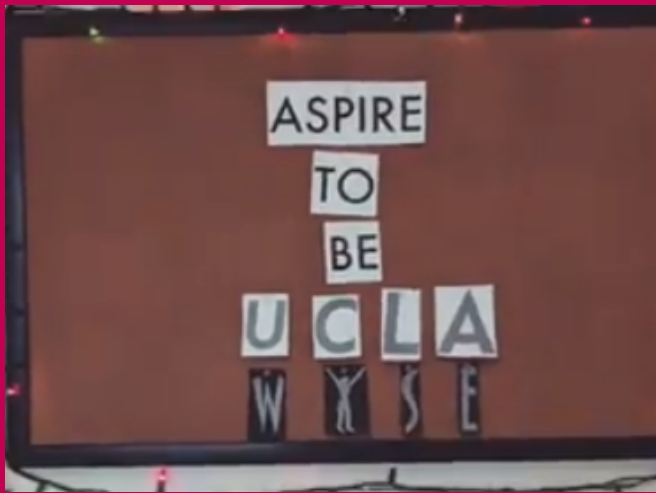
patient

independent

believing
in myself

be a good
listener

Just Be your self
personally



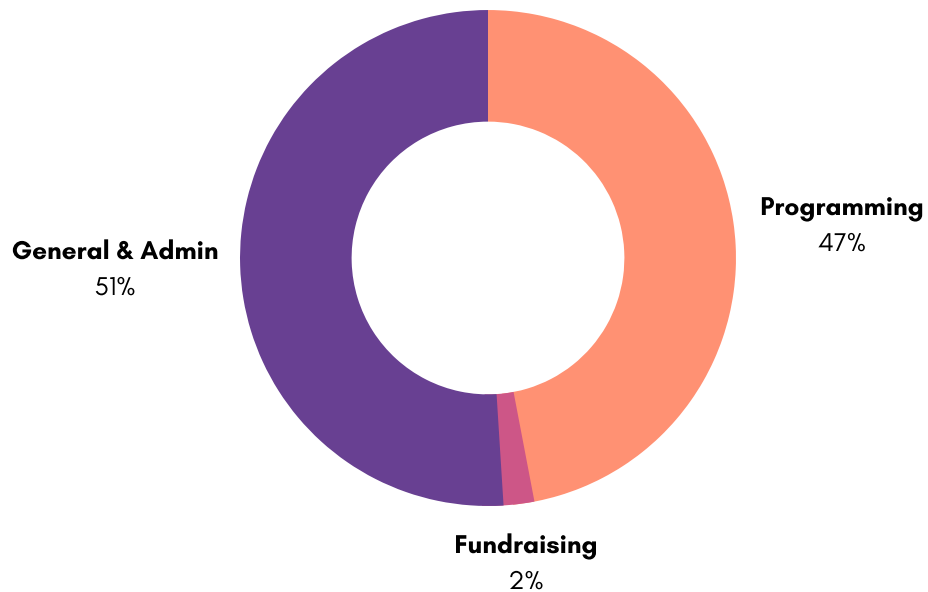


Financial Overview

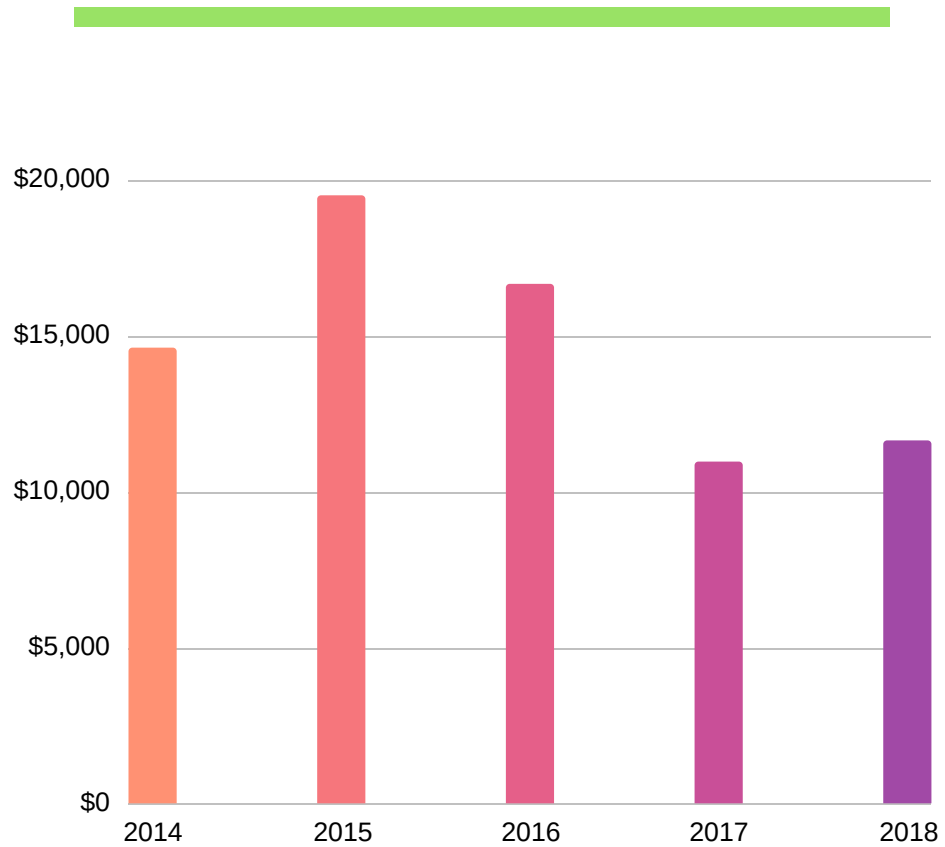
What did our finances look like in 2018? Here is an overview of the expenses and income for WYSE, with comparison to years past. WYSE is 100% volunteer-run organization, with all income going back into programming, admin, and fundraising support.

Expenses

Total expenses in 2018: \$11,646.93



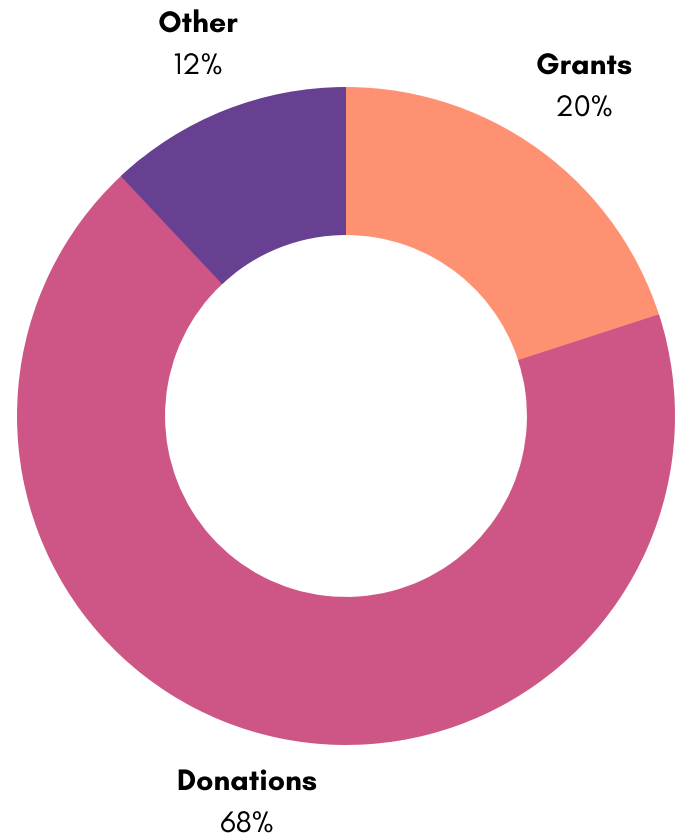
Expenses





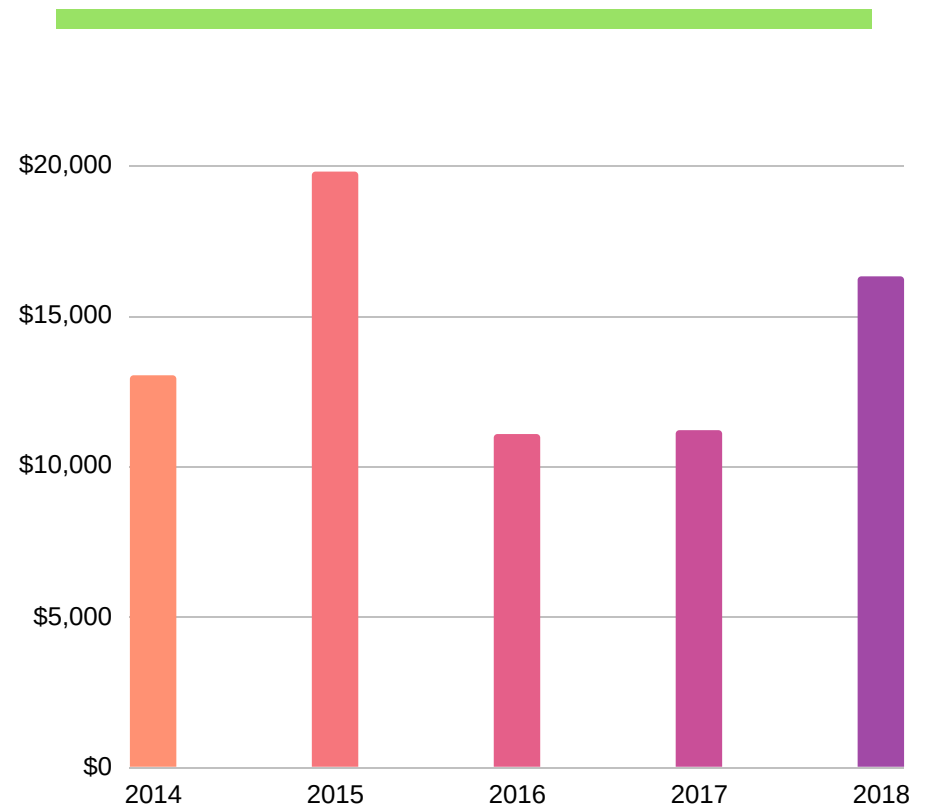
Income

Total income in 2018: \$16,308.36





Income



Thank You, Donors!

With the help of our donors, we were able to have one of the most successful individual-giving campaigns for Giving Tuesday 2018. Thank you to our generous donors and WYSE family that continue to support our programs across the nation.

Anna & Daniel Shaw-Amoah
Lloyd Pierce
Catie Murphy
Josh Cohen
Garrett Nastarin
Christina Morrisett
Ashish Tyagi
Holly Cohen
Tina Elmore
Kelsey Schroeder
Maddi Bukaty
Leslie Kurt
Yvonne Chao
Lauren Gorski Allen
Stephanie Kennedy
Stephanie Chin
Ilana Tabby
Clare Everts

Judy Luk
Noa Ervin
Carlene Danzy
Maureen Gorski
Tita Kanjanapas
Tiernaur Anderson
Callan Showers
Morgan Feist
Allie Blum
Mary Kate Skalitzky
Mariah Cherniss
Caleb Martin
Linda Leung
Marianne Miller
Caroline Lanford
Annlee Ellingson
Melissa Vogel
Tiffany Miao

Marc Lecerf
Lynne Shaver
Sidhu
Anna Akers-Pecht
Alysia Rodgers
Julie Showers
Amy Bard
Laura Allen
Sherry Li
Clover Lee
Laura Shaw
Remi Beek
Erin Donnelly
Anna Boyle
Maddi Bukaty
Beth Blum
Audrey Oppman
Megan Lambert

Chelsea Yost
Kristina Dubois
Marilyn Wakefield
Mary Liu
Shirley Bloomquist
Suzie Robertson
Alison Upton Lapez
Lessie Mackey
Gelyna Price
Marina Elmore
Leah Ghoston
Melissa Ghoston Pierce
Nancy Jean Ghoston
Elaine Peponis
John Pierce
Angela Siegele
Christina Morrisett
Alex Salzberg

Thank You, Community Support!

WYSE received in-kind services, pro-bono work, and corporate donations from the following organizations and companies in 2018:

Apple

AmazonSmile

Campus Catalyst at U Chicago

Greenleaf Gourmet Chop Shop

Jewish Foundation of Memphis

The Norman and Sadie Lee Foundation

Public Counsel



Connect with us

EMAIL

info@WYSE.org

PHONE

+1 605 956 2195

WEBSITE

www.WYSE.org



Thank You!

