

A Celebration of Our Branches

# WYSE *Annual* REPORT 2024

Women and Youth Supporting Each Other

Presented by the National Board of Directors





# UNDERSTANDING *WYSE*

Women and Youth Supporting Each Other (WYSE) is a national mentorship organization that provides adolescent girls in historically underserved communities with the information, resources, and support to make healthy decisions and create community change. With branches at ten universities nationwide, WYSE focuses on empowering women and girls through group-based and one-on-one mentorship offered by college women volunteers, and employs a national curriculum to address critical issues from building self-awareness to exploring future options.



# OUR MISSION

To empower young women by providing the resources and support necessary to make positive life choices and create community change.

# OUR VISION

To create a world in which all women are empowered to determine their future and effect change.

# INCLUSIVITY

WYSE is committed to inclusivity and belonging for all women: trans women, cis women, femmes, female-identifying, and individuals assigned female at birth. We envision a world in which we are all empowered to determine their future and effect change.



# *The* **PILLARS**



## **Critical Thinking and Decision Making**

WYSE women explore fully and think deeply about significant issues in order to make informed, deliberate decisions.



## **Personal Identity and Self Esteem**

WYSE women strive to recognize, explore, and proudly express who they are as individuals.



## **Strong Relationships**

WYSE women believe in the power of positive relationships to change lives. WYSE women dedicate themselves to being a positive influence and role model for those around them.



## **Safe Community and Exploration**

WYSE women express their ideas, ask questions, and learn in a safe, open, and accepting community. WYSE women encourage others to speak up and help each other discover new ideas.



## **Community Change**

WYSE women strive to make a better society by gathering information, spreading awareness and taking action on issues that are meaningful to them.



# OUR WYSE

## *Branches*

George Washington University

Marquette University

Occidental College

Stanford University

Tulane University

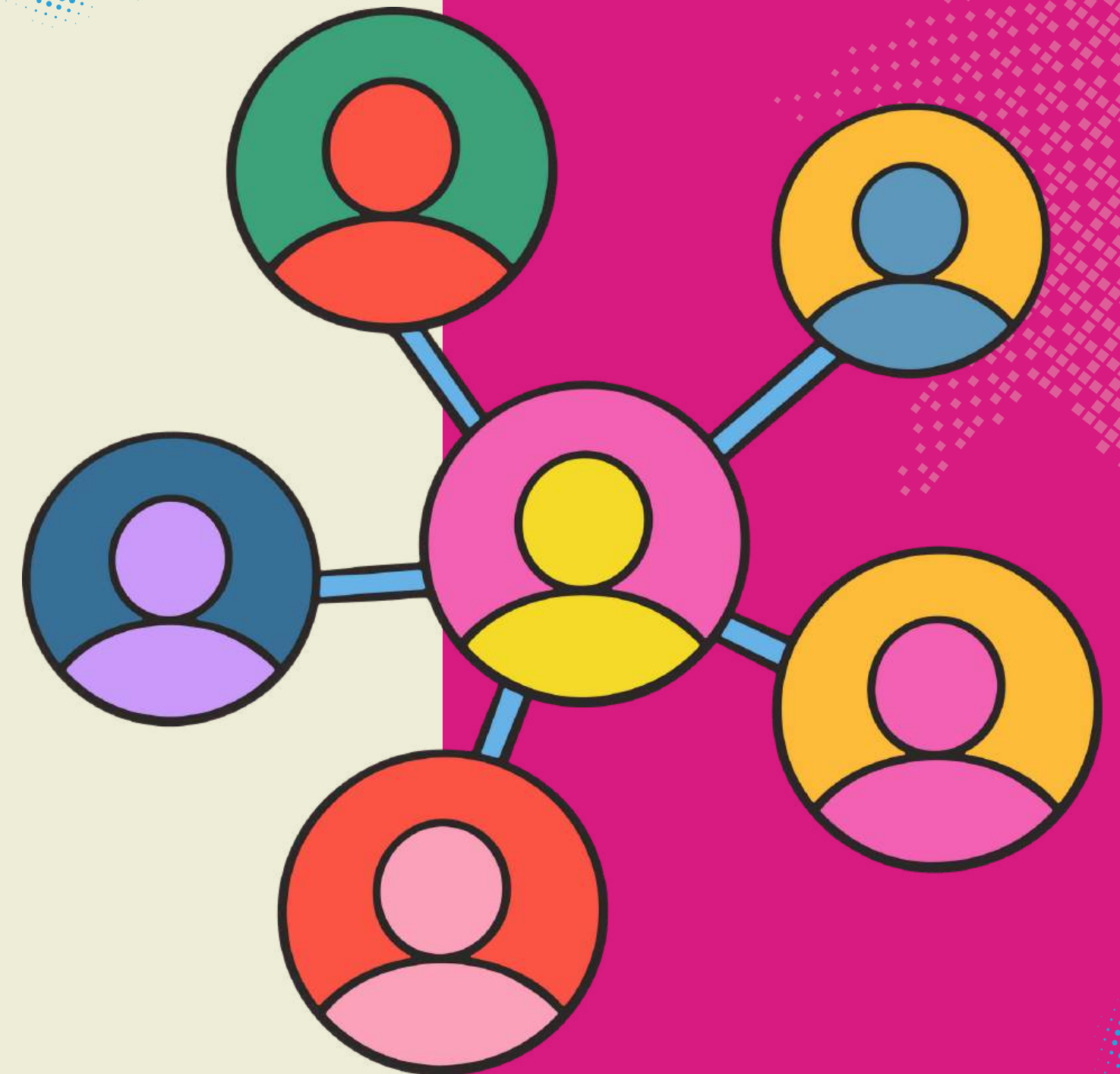
University of Chicago

University of California, Berkeley

University of California, Irvine

University of California, Los Angeles

University of Southern California



# OUR WYSE

## *Middle Schools*

Langston Hughes Academy **New Orleans, LA**  
Scholarship Prep **Santa Ana, CA**  
John B. Drake Elementary **Chicago, IL**  
Jefferson Middle School Academy **Washington, DC**  
Eliot-Hine Middle School **Washington, DC**  
Garland Middle School **Milwaukee, WI**  
Vista Charter Middle School **Los Angeles, CA**  
Camino Nuevo Charter Academy **Los Angeles, CA**  
Francisco Sepulveda Middle School **North Hills, CA**  
Mark Twain Middle School **Los Angeles, CA**  
PUC CALS **Los Angeles, CA**





# LETTER FROM THE BOARD CHAIR

As we reflect on 2024, I am filled with gratitude and pride for the continued strength of our WYSE community. In a year marked by deep social and political shifts across the country, our mission—to create spaces where women and girls learn to support one another, build self-esteem, and advocate for their own rights—has never been more essential.

Across the country, our mentors and youth leaders stood firm amid shifting political debates over women's rights and education. Yet many of our branches are now facing new policy challenges at their universities and in their local school districts that make our mission both more difficult and more necessary.

We need your support now more than ever to ensure that every girl can access the truth, encouragement, and community she deserves. Together, we can continue to make empowerment a reality.

With gratitude and hope,

*Anna Shaw-Amoah*





## A FEW *Highlights*

Some snippets about our Branches across the country.



## 260+ Mentors

Our mentors not only form bonds with mentees, but are leaders at their branches embracing WYSE's grassroots foundation.



## 225+ Mentees

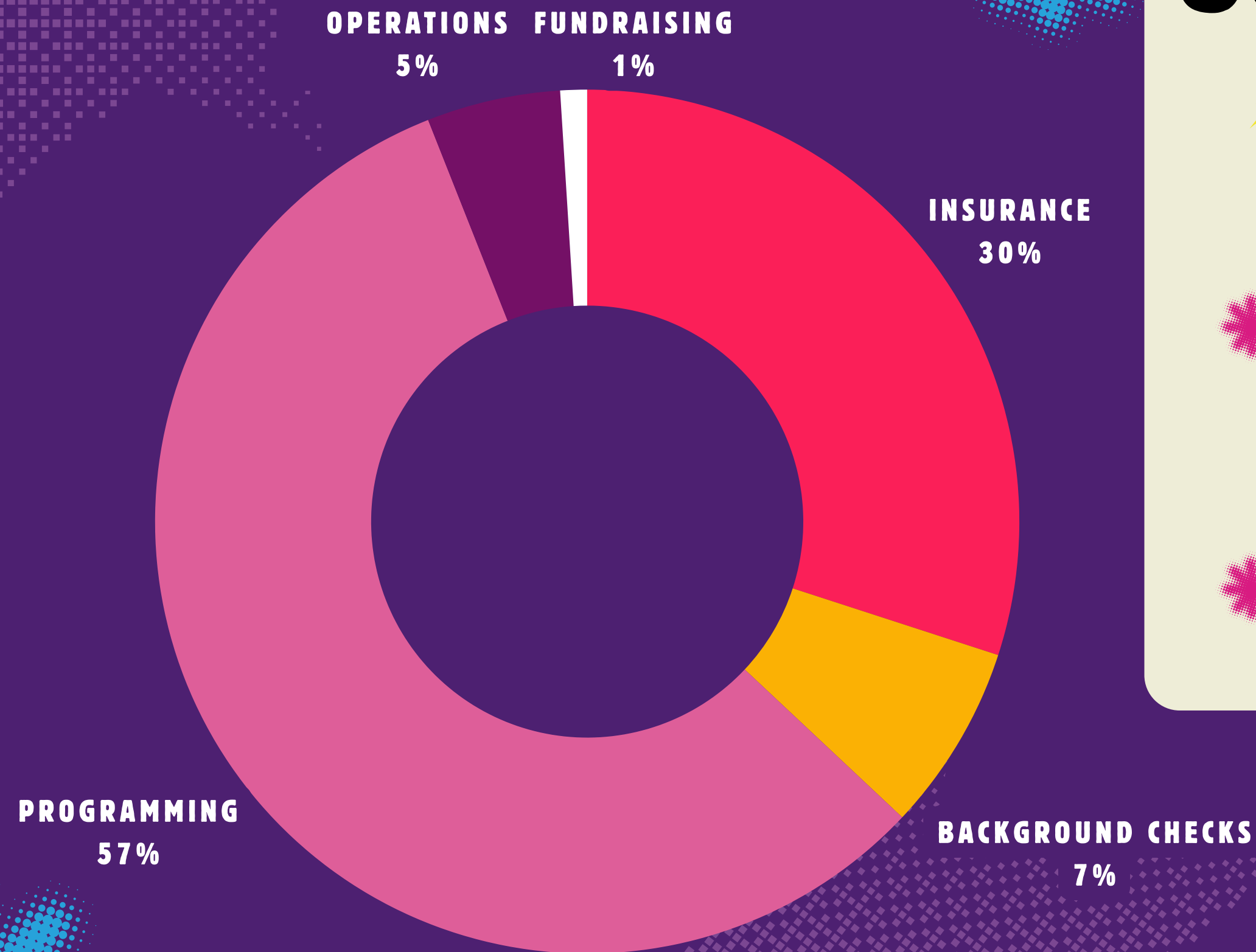
Mentees range from 6<sup>th</sup>- 8<sup>th</sup> grade, with favorite WYSE activities being opportunities to do skits and the Period Party!

*"I really like how WYSE provides accurate information to the mentees, which greatly prepares them to make their own safe decisions."*

**WYSE Mentor '25**



Total expenses in 2024: \$17,579.01



# OUR FINANCIAL

## *Snapshot*

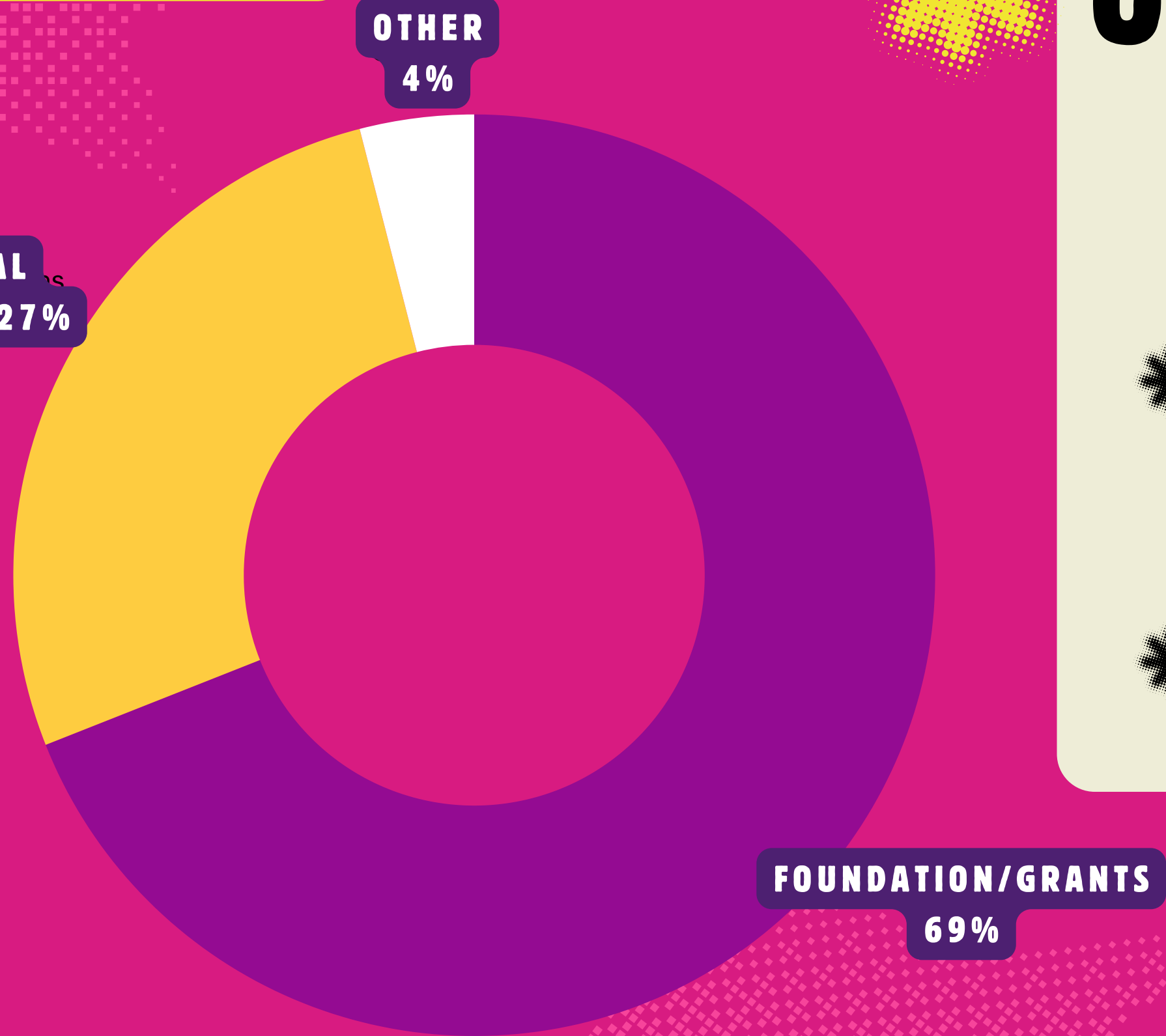


WYSE is a 100% volunteer-run organization, with nominal overhead expenses and all revenue channeled directly to programming, operations, and fundraising support.



WYSE relies on donations from our alumni networks and our giving campaigns annually.

Total revenue in 2024: \$11,363.07



# OUR FINANCIAL

## *Snapshot*

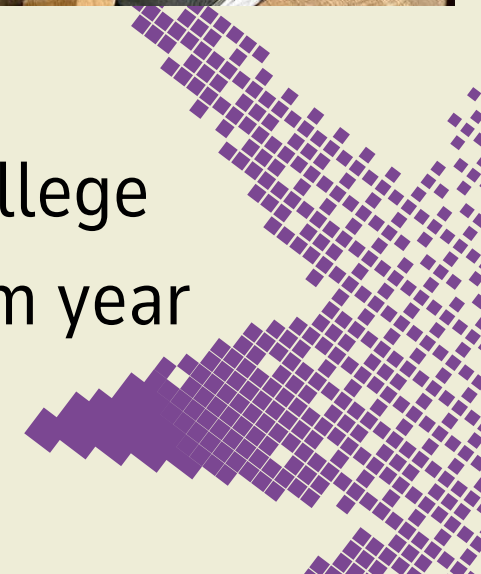


WYSE is a 100% volunteer-run organization, with nominal overhead expenses and all revenue channeled directly to programming, operations, and fundraising support.



WYSE relies on donations from our alumni networks and our giving campaigns annually.









# *National* **LEADERSHIP RETREAT**

The retreat combined professional development with community-building, featuring sessions diving into strategies for expanding branches, increasing in-person engagement, and planning for a successful year ahead. Directors shared insights and best practices, and discussions sparked ideas for deeper impact across WYSE. Beyond the workshops, attendees explored the vibrant city of Chicago and enjoyed a fun bowling night, building lasting connections in a new city for our retreat.

It was an inspiring and energizing weekend, setting the tone for a year of growth, innovation, and strengthened connections across the WYSE network.



# MARQUETTE UNIVERSITY

## *Spotlight*

In 2005, a former WYSE mentee attending Marquette started the process to establish a branch. By the fall 2006, WYSE proudly held its first session at a local public school in Milwaukee, Wisconsin. In 2013, WYSE was awarded the **Spirit of Marquette Award**, the highest honor for a student organization. Two decades later, WYSE Marquette continues to build relationships that inspire, guide and transform.





# THANK YOU, DONORS!

## IMPACT PARTNERS

Thank you to our recurring donors, who give to WYSE every month.

**Melissa Beek**

**Remi Beek**

**Leah Ghoston**

**Nancy Jean Ghoston**

**Melinda Goedeke**

**Nathalie Jaikissoon**

**Leah Jones**

**BJ Serviss**

## VISIONARY FOUNDATIONS

Thank you to the following foundations and companies for their meaningful gift to WYSE this year.

**African Delights**

**Pierce Family Charitable Fund**

**PayPal Giving Fund**

*\*These donations span January 1, 2023- December 31, 2024.*



# THANK YOU, DONORS!

## INDIVIDUAL GIVING

Thank you to our generous family of WYSE donors in 2024 that supported our programs nationwide.

**Anna Shaw-Amoah**

**Melissa Pierce**

**Joëlle Jackson**

**Evelyn Rodriguez Estrada**

**Victoria Moy**

**Linda Leung**

**Lauren Gorski Allen**

**Ana Rocca**

**Clara H Salzberg**

**Erin Silliman**

**M S Bailey**

**M Yvonne Chao**

**Paige Briggs**

**Sandy Sewhharack**

**Jessica Singh**

**Rachel Rummel**

**Laura Rensing**

**Gelyna Price**

*\*These donations span January 1, 2024- December 31, 2024*

# TOGETHER *We WYSE*

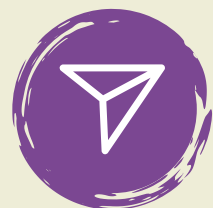
**LinkedIn:** Women and Youth Supporting Each Other

**Facebook and X:** @WYSEmentoring

**Instagram:** @WYSE\_Mentoring

[www.wyse.org](http://www.wyse.org)

[info@wyse.org](mailto:info@wyse.org)



Share our Annual  
Report with your  
networks



Donate to WYSE to  
support our next  
program year

